



MAKING CHILD SAFETY A PRIORITY

Invited Guest Speakers:

PAM HOLT

National CPS Board

TOM BALOGA

BMW

JOE COLELLA

Safety Seat Updates

REBEKAH BARANOWSKI

IMMI

JED LAM

Aeffect Marketing

Please visit our website for more information

www.buckleupillinois.org




**Illinois Department
of Transportation**
Division of Traffic Safety
3215 Executive Park Drive
Springfield, IL 62794

State of Illinois
Rod R. Blagojevich, Governor

Illinois Department of Transportation
Milton R. Sees, Acting Secretary



CSI: Illinois

Child Seat Inspector



Illinois Child Passenger Safety Conference

September 12-13, 2007

Interstate Center • Bloomington, IL
2701 W. Market Street

First Class
MAIL
U.S. Postage
Paid
Springfield, IL
Permit No. 880



**Illinois Department
of Transportation**
Division of Traffic Safety

ILLINOIS CHILD PASSENGER SAFETY CONFERENCE

September 12, 1:00-4:30pm

Tours of State Farm
and Mitsubishi

September 12, 5:00-7:00pm

Welcome Reception
Interstate Center
Exhibitor Hall

September 13, 8:30am-4:30pm

Illinois CPS Conference (min. 4 CEUs)
Interstate Center, Bloomington, IL

Nursing, CHES and CPS CEUs have
been applied for!

Sponsored by:



**Illinois Department
of Transportation**
Division of Traffic Safety

Please visit our website for more information

www.buckleupillinois.org

(detach and send)

September 12, 1:00-2:30pm (1 CEU)

Tour of State Farm (limited to 25 people)

I wish to attend

Tour of Mitsubishi (limited to 25 people)

I wish to attend

September 12, 3:00-4:30pm (1 CEU)

Tour of State Farm (limited to 25 people)

I wish to attend

Tour of Mitsubishi (limited to 25 people)

I wish to attend

September 12, 5:00-7:00pm

Meet and Greet Reception in Exhibitor Hall
Theme – CSI: Child Seat Inspector

I plan to attend

September 13, 8:30am-4:30pm

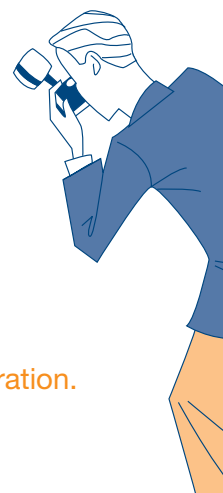
Illinois CPS Conference (min. 4 CEUs)

I plan to attend the confer-
ence on September 13.

Please check if you would
like a vegetarian meal at the
Awards Luncheon.

We have a limited capacity
of 350 attendees.

This is first-come, first-serve.
There will be no on-site registration.



Yes, REGISTER Me!

Name (as it will appear on name badge)

Organization

Address/City/State/Zip

County

Phone

Email (You will only receive confirmation if e-mail is provided.)

Registration Deadline: August 27, 2007

Registration Fee: \$30.00

Method of Payment:

Check Money Order

(Payable to SIU School of Medicine)

Visa Mastercard

Card Number/Expiration Date

Cardholder's Name (Please Print)

Signature

Mail registration and fee to:

Megan O'Connor
IDOT- Division of Traffic Safety
3215 Executive Park Drive
Springfield, IL 62794-9245

Illinois CSI: Illinois CSI: Illinois CSI: Illinois CSI: Illinois CSI: Illin